

Case Tractor – Mower – Tools: Husqvarna 22V46 XLS mower – 1949 Case DC tractor NF, needs restored – Dewalt 20” scroll saw – bench grinder – Delta 10” table saw – Sears 10” radial arm saw – Craftsman router – Dewalt power miter saw – Poulan 14” & 18” chainsaws – Oregon chainsaw sharpener – space heater – 4’ lawn roller – Brinley lawn sweeper – Simplicity rear tine rototiller – MTD push mower – bench top 8” drill press – garden tools – Campbell Hausfield air compressor – weed eater – Huskee chipper/shredder – battery charger – MVP 2 1/2 ton floor jack – electric cement mixer – toolbox and tools – Fimco pull type 12V sprayer – early belt-driven bench top drill press – single bottom plow – 48” mower deck for Simplicity lawn tractor

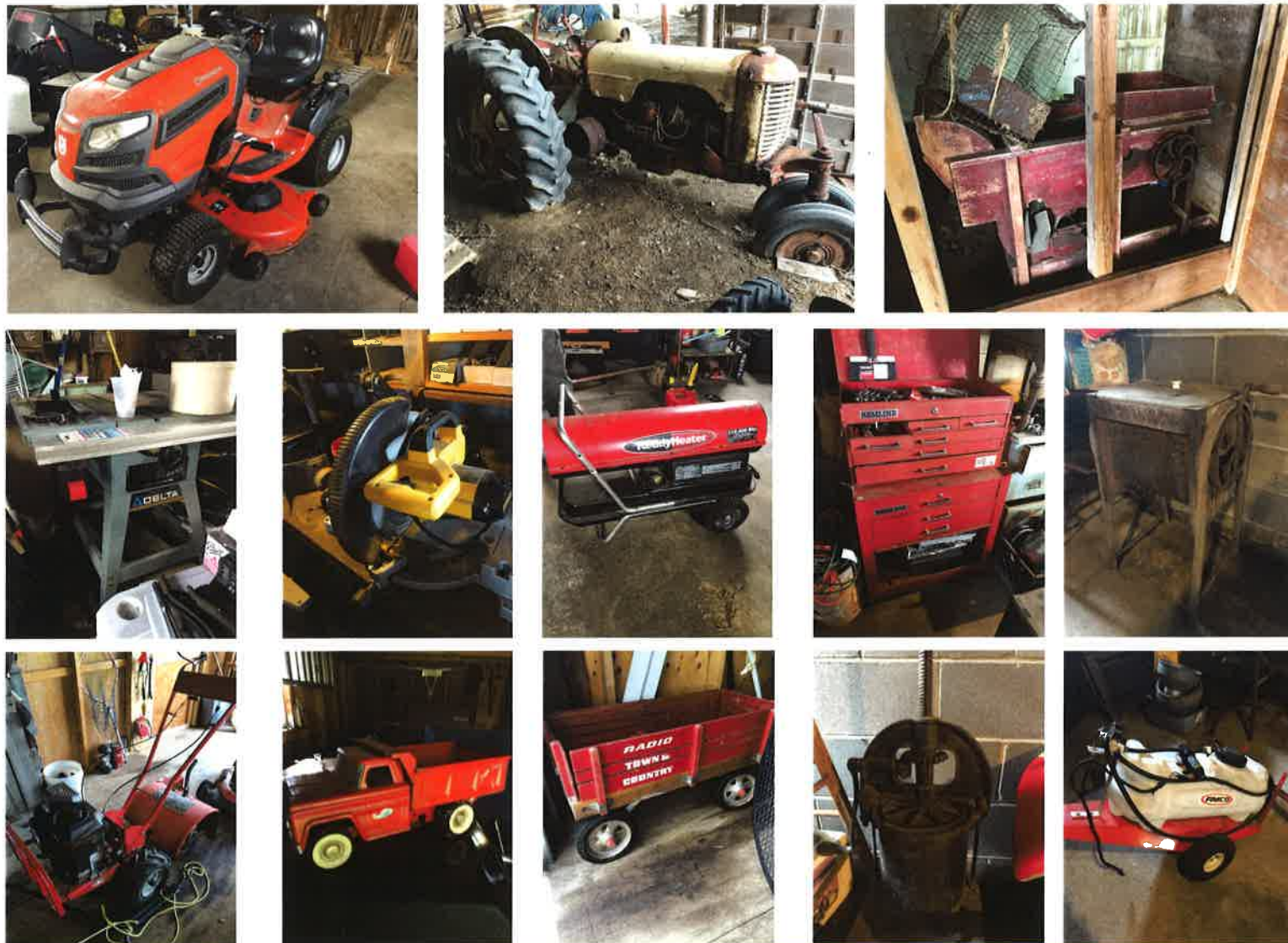
Collectibles – Household: Delaval cream separator – David Bradley cream separator – 5 & 10 gal milk cans – (2) Enterprise sausage presses – meat grinder – highchair – wood stenciled butter churn – platform scales – galv. Chicken nest – chicken feeder – wood hog crate – The Clipper seed cleaner – rough wood corn sheller – kids red wagon – Structo toy dump truck – TV – bed – storage cabinets – assorted household goods – dressers – wrought iron patio table – Shepard’s hooks – hose reel

TERMS ON CHATELS: Driver’s license or State ID required to register for bidder number. Cash, Check, Debit Card, Visa, or Master Card accepted. 4% buyer’s premium on all sales; 4% waived for cash or check. Information is believed to be accurate but not guaranteed.

Auctioneers/Realtors:

Randall L. Kiko, ext 158, 330-831-0174 and Russell T. (Rusty) Kiko, Jr., C.A.I., ext 115, 330-495-0923

Auction By Order Of: Brian Oberlin, executor for Norma J. Oberlin Estate. Stark Co. Case #227144



Explore Your Options

AUCTION

LEADING THE INDUSTRY SINCE 1945

Thursday – May 25, 2017 – 5:00 PM

Real Estate Sells At 5:30 PM

Norma J. Oberlin Estate

Owned Since 1951 – 74-Acre Farm – Paris Twp. – Stark County – Minerva Schools – Two-Story Home – Garage – Pole Building – Productive Farm Land – Pasture & Wooded Land – Strip Mine Lake – Mineral Rights Owned By Seller To Transfer – Offered In Parcels & As A Unit

Also Selling: Mower – Tools - Collectibles

To settle the estate, all sells on location:

555 Baird Ave. SE, Paris, OH 44669

Directions: Take Rt. 172 east of East Canton or west of Rt. 172 to Baird Ave. and south to farm. Watch for KIKO signs.



330.455.9357 • kikoauctions.com



330.455.9357 • kikoauctions.com





Real Estate: 74.11 acres total with two-story home. Main level features eat-in kitchen, family room, main level bedroom, possible 2nd bedroom/office, full bath, enclosed back porch, four second level bedrooms, with central air wall unit, full concrete block basement with laundry area, breaker electric, FA LP gas heat with access to enclosed breezeway and approx. 16' X 24' concrete block garage. Older 32' X 56' pole building with 20' X 56' lean to, partial concrete floor. Good drilled well, private septic system. Approx. 20 acres of good farm land, balance wooded, and reclaimed open pasture land, with strip mine lake. Loads of frontage on Baird Ave.

Divided as follows:

Parcel #1 – Approx. 13.6 acres with all the buildings. Open and wooded land.

Parcel #2 – 6.89 acres land, mostly all open. Nice parcel.

Parcel #3, #4, #5, & #6 – Ranging from 9.6 acres to 15.7 acres each, all with tillable, pasture and wooded land. Parcel #5 has shared strip mine pond. All with nice frontage on Baird Ave.

TERMS ON REAL ESTATE: 10% down auction day, balance due at closing. A 10% buyer's premium will be added to the highest bid to establish the purchase price, which goes to the seller. Any desired inspections must be made prior to bidding. All information contained herein was derived from sources believed to be correct. Information is believed to be accurate but not guaranteed.

